

## Features

- Locks to Fractional Frequencies
- Wide Operating Temperature
- Ultra Low Phase-Noise
- Small Size
- Low Spurious
- No Subharmonics
- Low Power Consumption

## Description

The Series PXS phase locks a single crystal oscillator, operated in the 5 MHz to 200 MHz range, to an external 1 to 100 MHz customer supplied reference. Narrowband digital synthesis techniques

are utilized to achieve the optimum balance between the excellent long term stability of the external reference and the extremely low phase

## Typical Performance Specifications

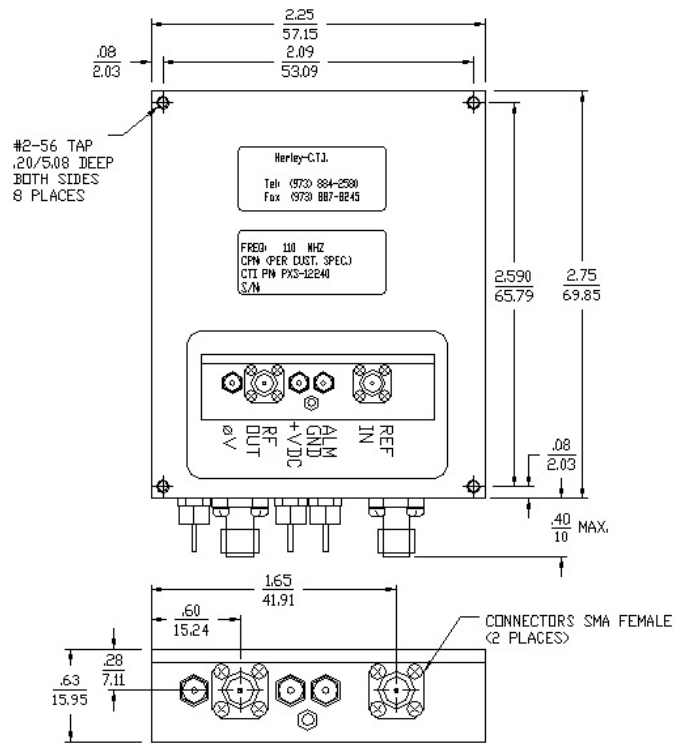
Parameter	Specifications
Output Frequency Range	5 MHz to 200 MHz
Output Power	0 to+13 dBm
Power Variation	±1 dBm
Load VSWR	1.5:1
Supply Voltage*	+12 or +15 Vdc
Regulation	±0.5 V
Current *	250 mA
Spurious	-90 dBc
Harmonics	-30 dBc
Phase Noise	See Table
Alarm	TTL High in Lock
External Reference Frequency	1 MHz to 20 MHz
Input Power Level	0 dBm ± 3dB
Frequency Stability	Same as Reference
Connections	
RF Output	SMA-F
Reference Input	SMA-F
Reference Monitor	N/A
Alarm	Feed thru
Supply Voltage	Feed thru
Ground	Solder Lug
Operating Temperature	-30°C to +75°C



Typical Phase Noise

Frequency Offset from Carrier (Hz)	Phase Noise (dBc/Hz)
100	-110
1 k	-140
10 k	-150
100 k	-155

Outline Drawings



Dimensions are in Inches/mm, Tol. .xx=+/-0.02, .xxx=+/-0.005